

Contact/Edged Weapon Wounds

CAUTION! The following images are graphic and not for the faint of heart. They are displayed here to show & demonstrate the destructive and sometimes deadly results an edged weapon or contact weapon bearing aggressor can inflict. Photos where victim survived or expired will be noted.



Right side torso/Edged Weapon



Low back/Edged Weapon-stab wounds



Edged Weapon- stab wounds



Face/Glass



Throat/Glass



Back of neck & head/Edged Weapon stabs/Expired



Left Torso/Edged Weapon/Survived



Left neck/Edged Weapon/Survived



Right arm/Edged Weapon



Upper torso/Edged Weapon



Left hand/Edged Weapon defensive wound



Unknown location/Edged Weapon stab



Unknown location/Edged Weapon stab



Upper torso/Edged Weapon stabs/Expired



Left torso/Edged Weapon stab



Edged Weapon slash



Left foot/Unknown



**Death by
knife**

Upper torso & head/Edged Weapon/Expired



Upper, lower torso & legs/Edged Weapon/Expired



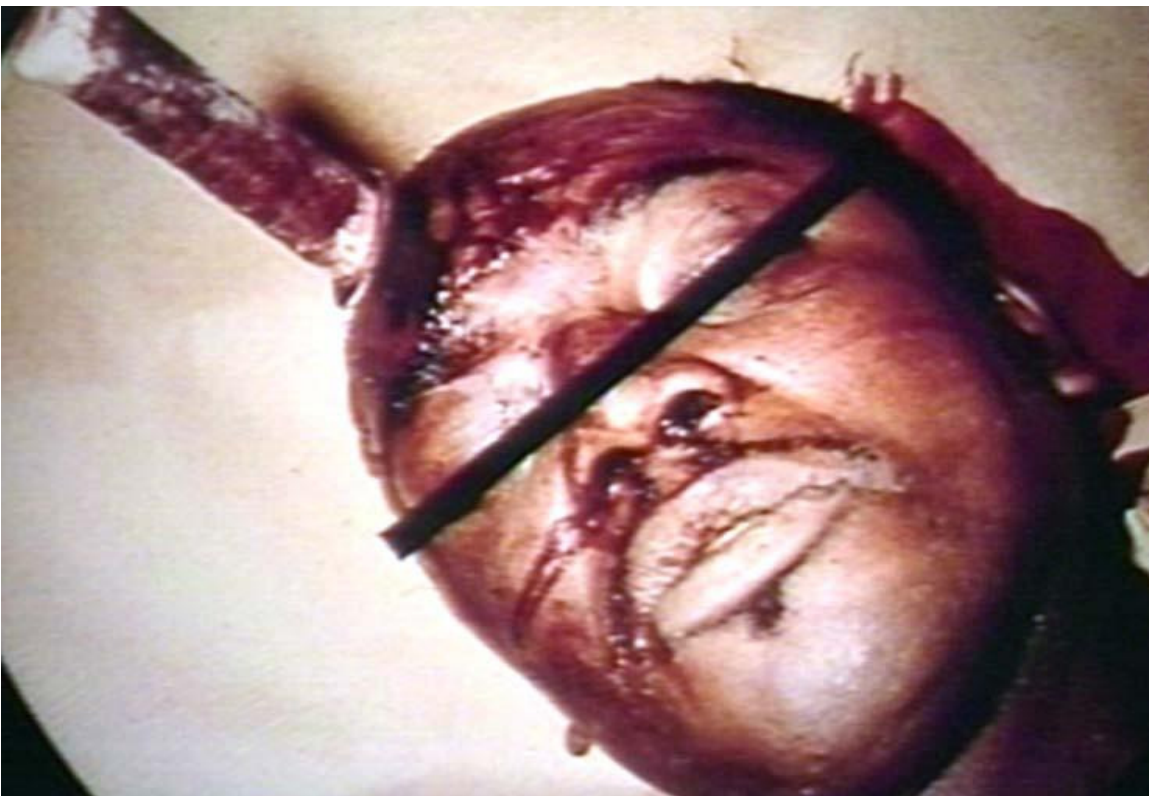
Upper torso & abdomen/Edged Weapon/Expired



Upper torso, neck, face/Edged Weapon/Expired



Left side upper torso/Edged Weapon stabs/Expired



Forehead/Edged Weapon/Expired



Left side upper torso/Edged Weapon



Throat & face/Edged Weapon



Left side of neck/Edged Weapon



Left side of neck/Edged Weapon



Arms/Edged Weapon/Self inflicted



Forehead/Garden tool



Chest/Butcher knife/Survived



Chest/Butcher knife 2



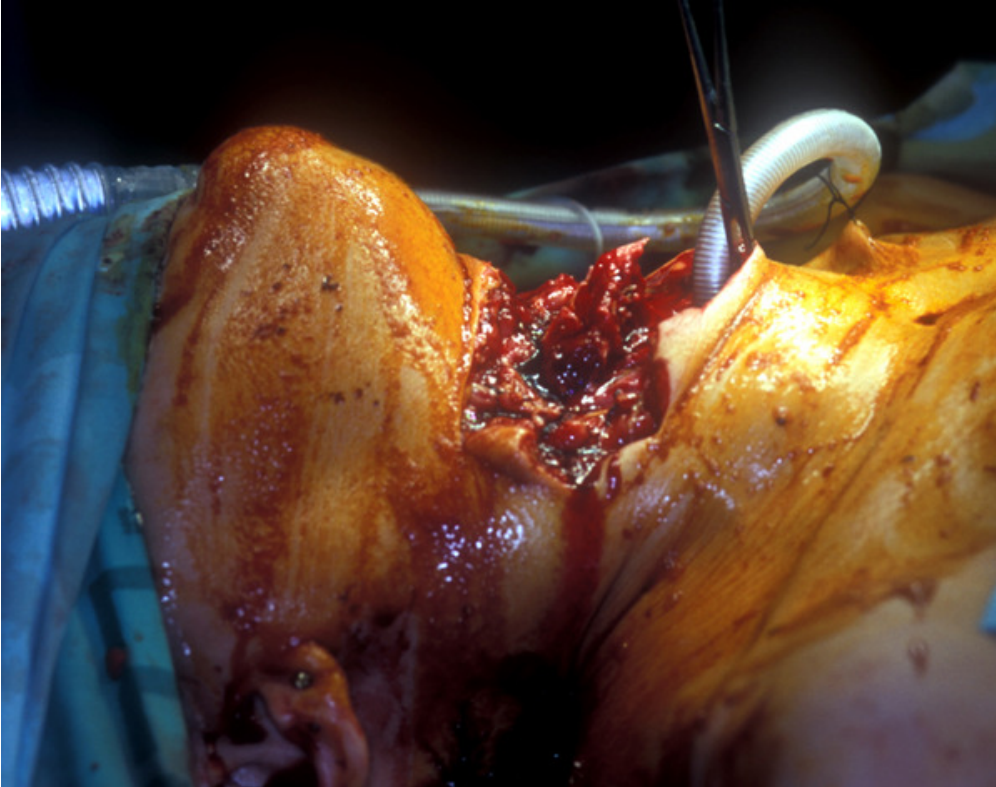
Left side of head/Butcher knife/Walked into ER



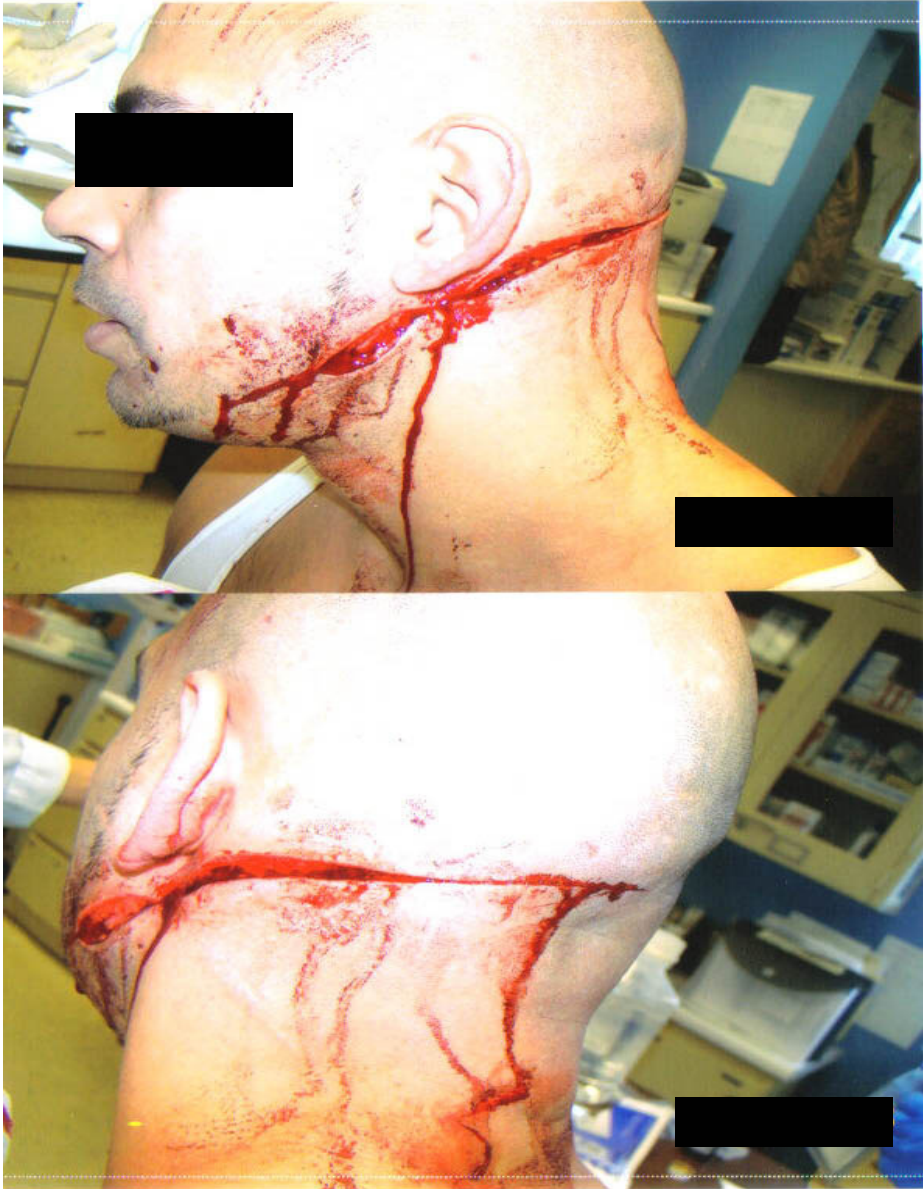
Left hand/Edged Weapon defensive wounds



Right neck/Knife/Survive



Throat/Edged Weapon/Survived



Left neck/Folded canned tuna lid



Abdomen/Edged Weapon/Self inflicted wound- methamphetamine addict



Right side of head/Edged Weapon/Survived



Right neck front/Sword/Survived



Right neck side view



Tracheal Tran section



Right neck/Rebar impalement

